

# Dax DX-137M-DN10-I-H IP Camera

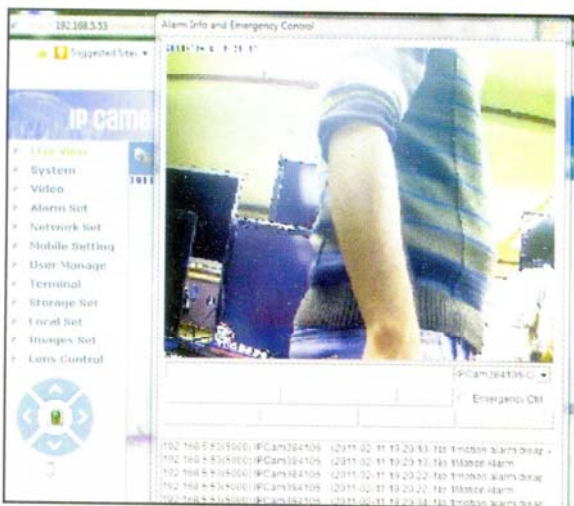
This 2 MP IP camera has a good quality image and the CMOS sensor makes it sensitive to the slightest movement

Shumpy Saini

**D**ax DX-137M-DN10-I-H Indoor Dome Camera is a 2MP IP camera with a progressive CMOS sensor. Its H.264 video compression algorithm transmits high definition video over low bandwidth. It supports upto 30 frames per second and it also adjusts the frame rate according to the bandwidth. IR LEDs built-in allow it to be used even in poor lighting conditions. We connected this camera in an isolated test network. Then we installed an application, SearchNVS, which helps in automatically detecting the IP camera over the network. Once its been detected on the network, then it can be assigned the IP address through DHCP or manually. To operate the camera we opened the Internet Explorer and entered the IP address of the camera in the URL to get to the login page. It uses the ActiveX Control to play images and sound on your PC. Through the Internet Explorer interface you can change settings for network, alarm, and mobiles.

## Features and performance

We tried to change the settings of the alarm and set the sensitivity to 5, which is highest. We set the sensor and motion alarm. Camera was fast enough in detecting the slightest move-



It is very sensitive to changes in motion, and raises alarm instantly.

## Snapshot

- Price:** Rs 25,590 (1 year warranty)
- Meant for:** Offices, banks/ATM, and retail stores
- Key Specs:** 2MP camera, CMOS sensor
- Pros:** Very sensitive to movements
- Cons:** None
- Contact:** Dax Networks, Chennai
- Tel:** 42923558
- Email:** help@dax.in
- SMS Buy 130312 to 56677**

*Test Bed: AMD Athlon 64 FX-55 Processor 2.61 GHz, Windows 7(32-bit), 1 GB RAM, 20 GB Hard Disk.*

ment and a screen appeared with the logs, containing date and time, and the current view of the camera. If you want to get the alarm status on your email, then you can also set the mail box addresses to which the notifications will be mailed. You can also set the camera to start recording once it detects any movement. You can also set the duration of recording. If you have multiple cameras installed then you can create three users for each camera. Out of these three one will be administrator and the other two, general users. You can also schedule the recording and snapping. For each schedule two time periods are allowed. There are two file saving modes available: email and FTP. If you want to zoom in any particular area for surveillance then you can select that area and a separate window will appear, through which you can monitor that area. For security purposes a lock icon is provided, that locks the screen so that no one can make changes or click on any icon. To unlock, you need to get yourself authenticated. This camera has good image quality, features and is priced lower when compared with Smart Hawk SHC 100M (reviewed in Feb 11), with a 1.3 MP cube camera.

**BOTTOMLINE:** An IP camera with very good resolution, feature rich software, and excellent viewing and motion detection. A good buy.

